

The City School
 University Road Campus
Science Reinforcement
Worksheet # 1
Class 3



Name :

Section:

Date:

Q.1 Encircle the correct answer:

1. What part of the carrot plant do we eat?

- a) Root b) Stem c) Flower d) Leaf

2. When a plant grows ...

- a) It gets shorter b) It dies c) It gets taller d) It drops its leaves

3. What do leaves do?

- a) Make water b) Take water from the soil c) Make food

4. What happens when a plant gets too much water?

- a) It grows very quickly b) It can die c) It gets more flowers d) It climbs out of its pot

5. Which of these is a list of things plants need for healthy growth.

- a) Exercise, food b) Exercise, food, water
 c) Water, light, warmth d) Water, exercise, food, light, warmth

6) What does a plant stem do?

- a) Carries water from the roots to the leaves b) Makes sure that the roots stay in the ground
 c) Makes food for the plant d) Helps to keep the plant warm

Q.2 State whether true or false.

- a. Adding water to the field is called drainage. ()
 b. To conduct a fair test we must change only one factor while keeping all other conditions same. ()
 c. We eat the roots of spinach. ()
 d. The part of the plant that act like a straw to carry water from the roots to the leaves is called stem ()
 e. The roots keep the plant steady and upright in soil. ()

Q3: We eat different parts of different plants. Place the following in their correct column.

beansmint beetroot cauliflower sugarcane ginger peas spinach broccoli parsnip				
stem	roots	leaves	flower	seed

Q4:Tina grew three plants. One plant was given everything it needed. The other two were stopped from getting one thing.



Plant A.



Plant B.



Plant C.

a. Which unhealthy plant could be made healthy again?

Ans. _____

b. What would you do to make it healthy again?

Ans. _____

The City School
University Road Campus
Science Reinforcement
Worksheet # 2
Class 3



Name :

Section:

Date:

Q.1 Write True and False according to the statements given:

1. A plant grows very quickly if it gets too much water. _____
2. Adding water to the field is called irrigation. _____
3. Roots transport water to stems. _____
4. The tallest stem in the world belongs to redwood tree. _____
5. Leaves exhale carbon dioxide and inhale oxygen. _____

Q2: Match the column.

Column A	Column B
stem	carrot
root	rhubarb
leaves	strawberry
fruit	spinach

Q3: Give reasons of the following statements.

a. Plant doesn't grow well if given too much water.

b. Plants are grown in greenhouse.

c. We can't eat the stem of rhubarb plant.

d. Plants need healthy soil for growth.

e. Light is necessary for the leaves of plants.

Q4: . Define the following terms:

I. Organisms _____

II. Trunk _____

III. Irrigation _____

IV. Fertilizer _____

V. Waterlogged _____

Q5: Following is a plant:

i. Write the names of the labels:

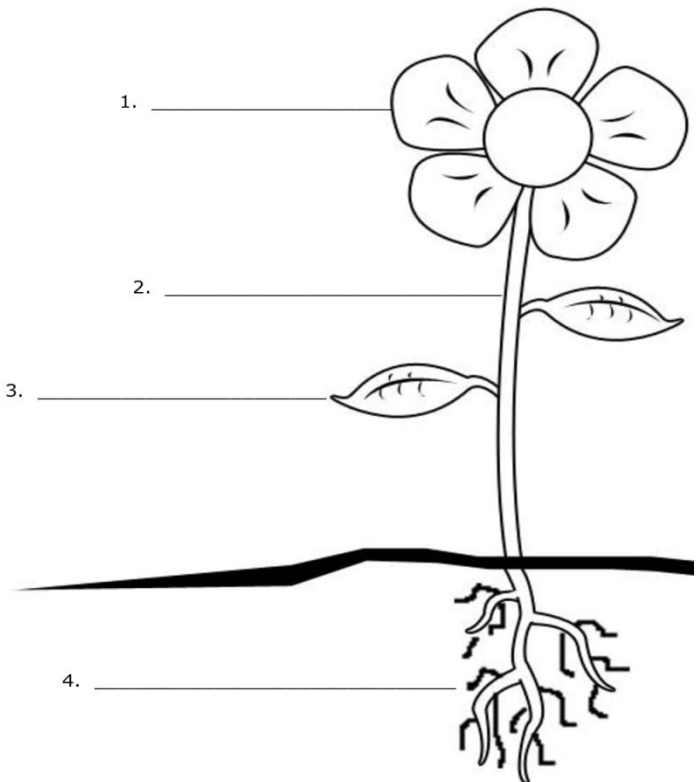
1. _____

2. _____

3. _____

4. _____

ii. Write the function of no. 4.



The City School
University Road Campus
Science Reinforcement
Worksheet # 3
Class 3



Name :

Section:

Date:

Q.1 Circle the correct answer.

1. What can rocks be used for?

- A. plate B.walls C. clothes D. windows

2. Which answer shows only natural materials:

- A. rocks and bricks.
 B. wood and rocks.
 C. brick and glass.
 D. wood and glass.

3. Which thing you can use to separate particles of different size?

- A. sieve B. spade C. bowl D. plate

4. Why does water run through sandy soil?

- A.The particles are square.
 B. There are space between the particles.
 C. The particles are very small
 D. There are no space between the particles..

5. The texture of rocks describe the :

- A. color of grain B. size of grain C. Shape of grain D. all of them

Q.2 State whether true or false.

- f. A field with sandy soil will dry out faster. ()
 g. Soil is made from tint pieces of rocks. ()
 h. Granite is best to make door step. ()
 i. We use sandstone to make statues ()
 j. Gneiss contains the same minerals as Granite in same amount. ()

Q3. Differentiate between the following

Igneous rocks	Metamorphic rocks
Granite	Gneiss

Q 4: Answer the following questions.

a. What three minerals are found in Granite?

b. Where can granite be used?

Q5 How small stones are helpful for the birds? (refer to pg. 45 of exploring science book)

Q6: Look carefully in your room

a: Make a list of the different materials in your room.

b: Tick the natural materials from your list.

The City School
University Road Campus
Science Reinforcement
Worksheet # 4
Class 3



Name:

Section:

Date:

Q1: Complete the given passage by choosing words from the box:

crystals	quartz	calcite	grains	minerals
----------	--------	---------	--------	----------

Rocks are made from tiny pieces called _____. The different colors of grains are of different _____. Sandstone is made of rounded grains of _____. Marble is made of very tiny pieces of _____. Some minerals grow into quite big _____.

Q2: Match the rocks with its correct use.

	Column A		Column B	Column C
1.	Gravel	a	To make roof tiles because it can split into thin sheets	
2.	Slate	b	To make toothpaste.	
3.	Limestone	c	To make roads and railways	

Q 3: Mrs. Black wants a little statue for her garden. Which rocks should she choose from? Explain your answer.

Q4: How are they formed?

a. Igneous rocks:

b. Sedimentary rocks:

c. Bricks:

d. Glass:

Q5: Fill the following table to show the example of each kind of rock.

Types of rocks	Example
Sedimentary	
Igneous	
Metamorphic	

Q5: What three things can make a rock wear away?

a. _____

b. _____

c. _____

The City School
University Road Campus
Worksheet # 5
Class 3



Name :

Section:

Date:

Q1: Complete the given passage. (refer to pg. 55 of Exploring Science)

Clay soil have very _____ particles that are too small to see. The particles fit together closely, so there is not much space for _____ to flow between them. Sandy soil have much bigger particles. There are _____ between the particles that water can flow through.

Q2: State 'True' or 'False'.

- a. Soil contains organic material and living organisms in addition to rock particles. ()
- b. Kind of soil does not depend on the rock it comes from. ()
- c. Some rocks are permeable, they let water run through them. ()
- d. Water does not drain easily through sandy soil. ()
- e. Slate does not let water soak through them therefore, it is known as permeable rock. ()

Q3: Match the description in column A with the correct word in column B.

Column A	Column B
Are very small stones.	Sieve
Use to find different particles in soil.	Loamy soil
Best soil for farming and gardening.	Gravel

Q4 : Following are questions about rocks and soil .Give two reasons for each.

a. Why is granite used for making buildings?

b. Why should we use 'slate' to make roof tiles?

c. Why is 'chalk' used to write on blackboard?

d. Why water runs through sandy soil easily?

e. Why is loamy soil the best for farming?

Q5: Why can't we usually see rocks? Illustrate any two different reasons.

--	--

The City School
University Road Campus
Worksheet # 6
Class 3



Name :

Section:

Date:

Note: (Use loose sheets to answer the following questions)

Q: Give reasons of the following questions.

- a. Why healthy roots are required to make a plant grow healthily?
- b. What would happen if all the leaves of the plant are cut off?
- c. Do plants need light to grow well? How can you tell?
- d. What three parts do plants need to be healthy so they can grow well?
- e. Are plants organisms? Why?
- f. Why doesn't brick called a natural material?
- g. Why having the different stones in a single wall is a fairer test? (pg. 48 test wall)
- h. What is marble used for? Why is marble used for this purpose?
- i. Which rock wears out the quickest and why?
- j. What did you keep the same to make your test fair during investigating the drainage through different soils?
- k. How are magnets useful in fridges?
- l. How will you arrange a pair of magnets so they can attract or repel each other? (Illustrate)
- m. How are you going to find out which materials a magnet will work through?

The City School
University Road Campus
Worksheet # 7
Class 3



Name :

Section:

Date:

Q: Do the following pages of Science booklet

- Quick quiz (magnets and spring)
- 3Ea/1 pushes and pulls.
- 3 Ea/2 magnetic materials
- 3Ea/4 using magnets
- 3 Ea/5 magnets and materials

Activity:

Make a magnetic maze

Things required:

To make these paper plate mazes:

- Paper Plates Chopstick
- Strong Magnets
- UHU liquid
- Glue Stick
- Scissors
- White Cardstock
- Maze Printable or drawing

Steps to follow:

1. Draw maze on a paper or print it, add color to the graphics with color pencil.
2. Then carefully cut out the maze.
3. Use a glue stick to attach the maze to the paper plate.
4. To make a magnetic wand, attach the magnet with chopstick by the help of UHU liquid
5. Make and cut a snowman (or any character), glue the magnet to cut out character .
6. Wait a few minutes for the glue to set then called the kiddos over to play.



Enrichment: make sure your magnetic wand and character will attract each other and will not repel after gluing magnets. (Use the opposite pole magnets for them).

The Science Behind Magnetic “Magic”

One of the most amazing things about magnets is the way they can exert control over another object without even touching it. The poles are the parts where the magnets are strongest. Around these poles is an area known as a magnetic field. For another object to be drawn to the magnet, it has to be within its magnetic field. And that is how a magnet can exert control over another object without even touching it!